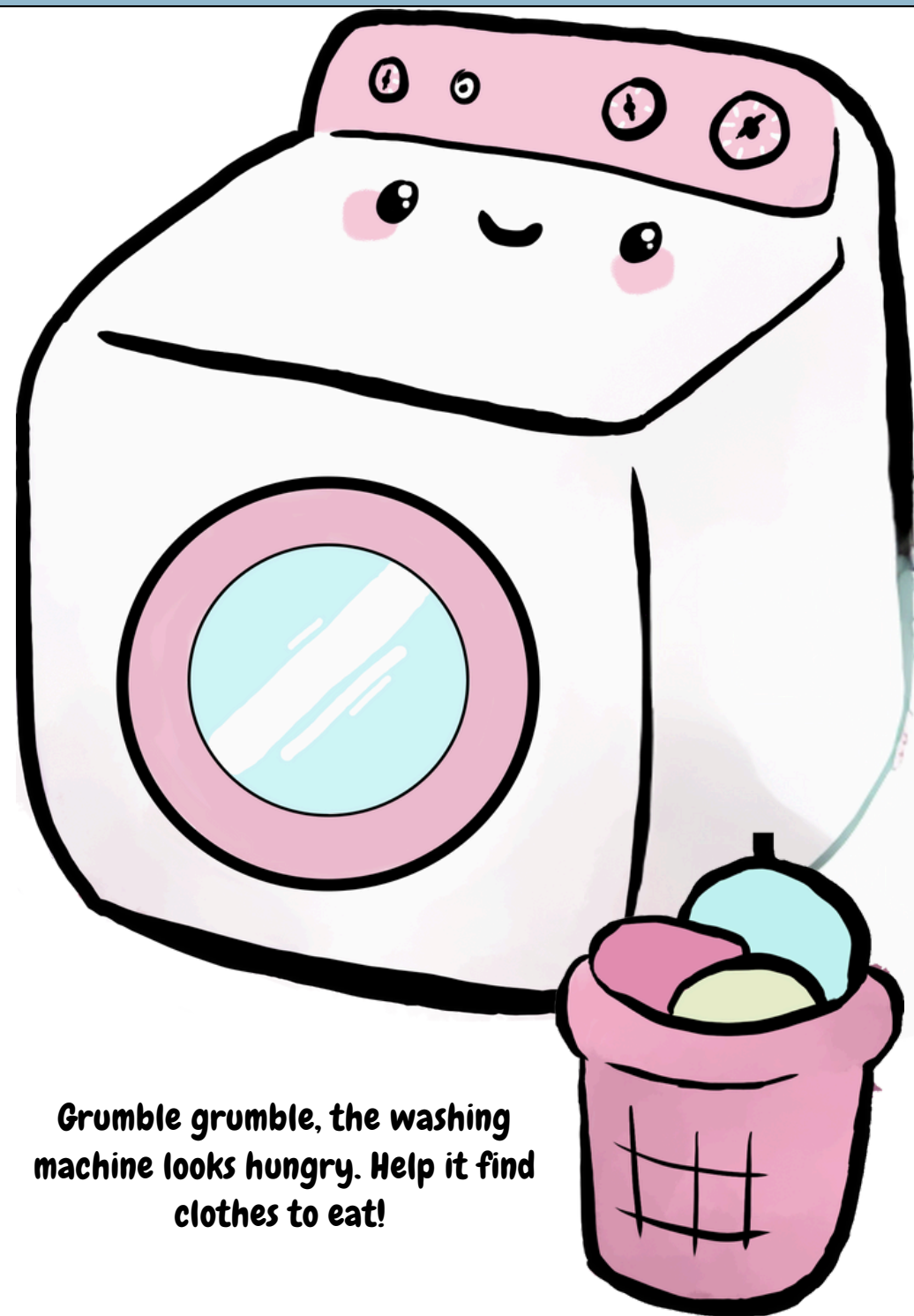




WHERE DOES IT  
GO?



**Help decorate me for the holidays!**

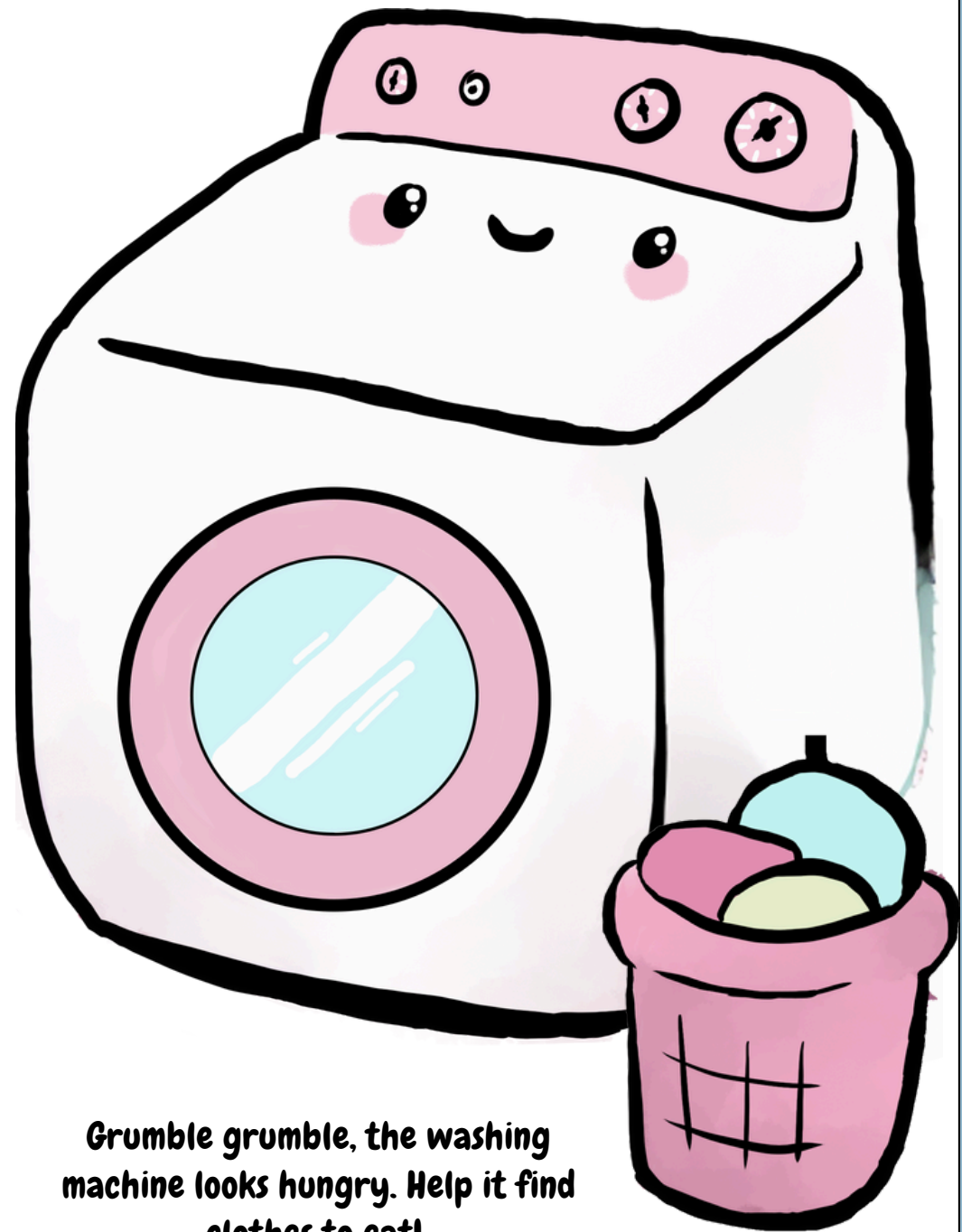


**Grumble grumble, the washing machine looks hungry. Help it find clothes to eat!**



**OOPSIE DAISY!**

Someone left the gate open at the Zoo! All the animals ran away. Can you help the Zoo Keeper find all the animals?

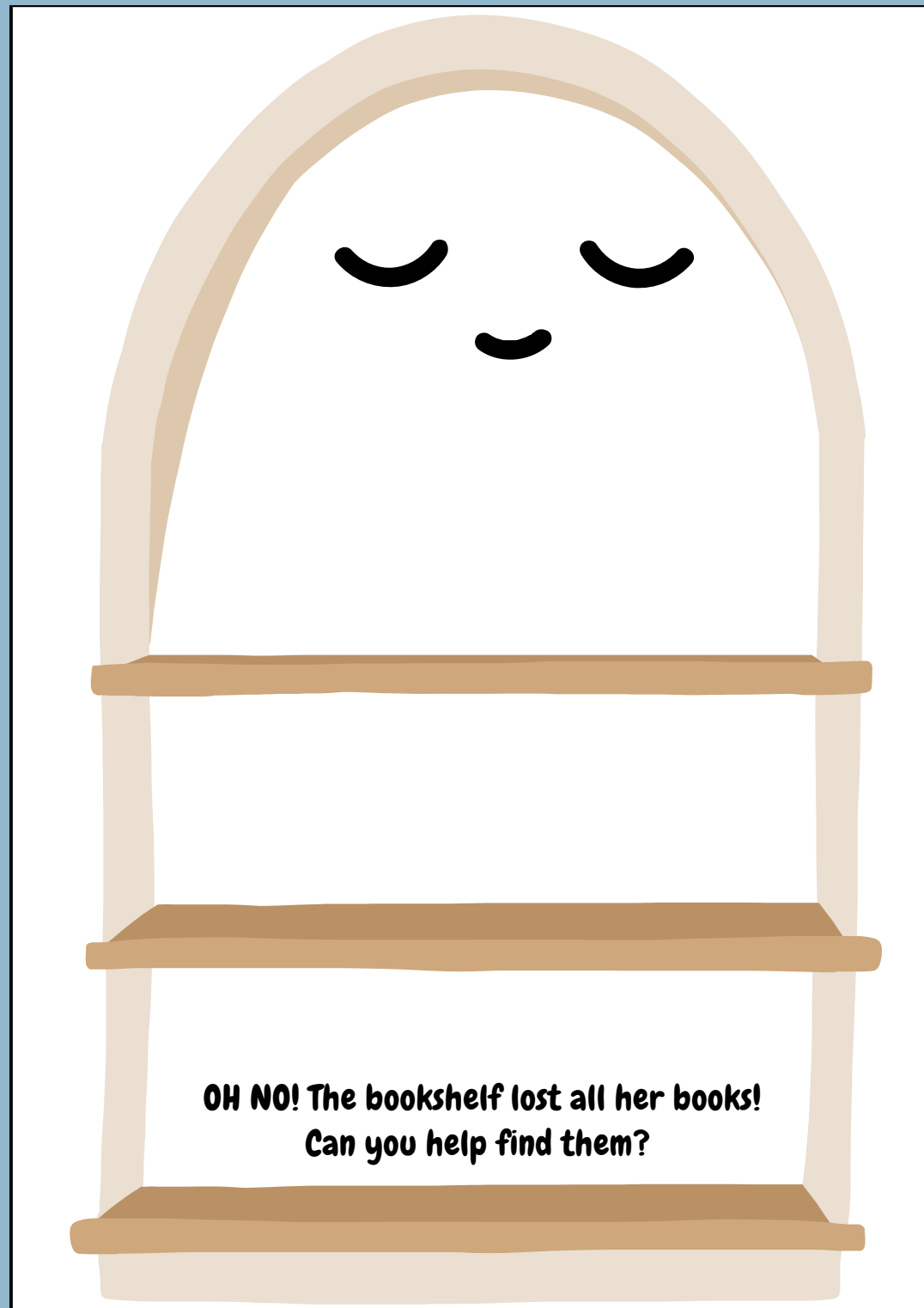


Grumble grumble, the washing machine looks hungry. Help it find clothes to eat!

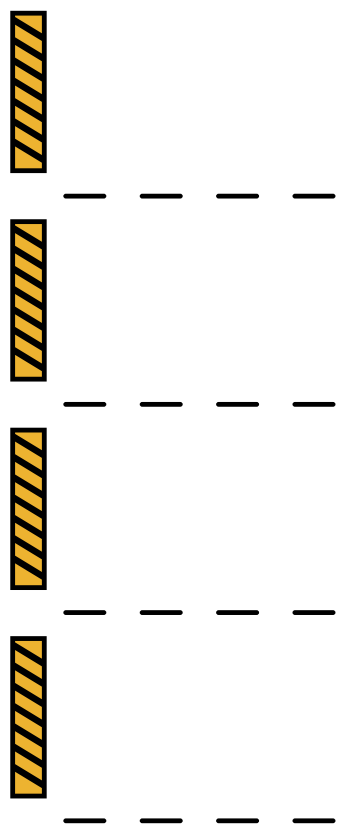
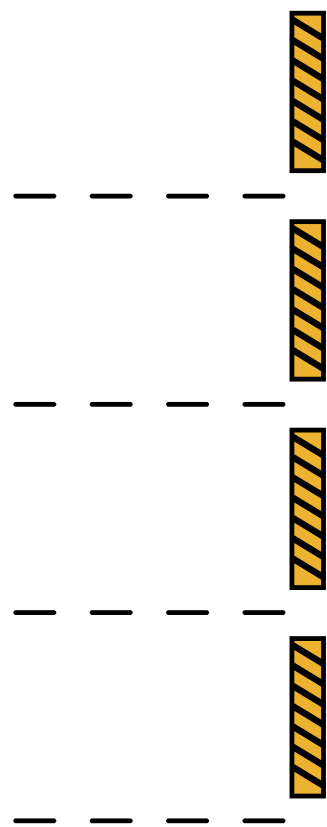
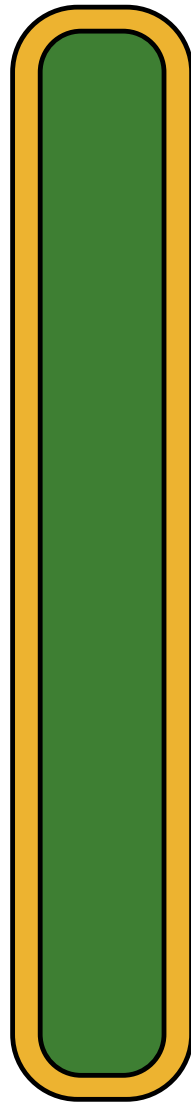
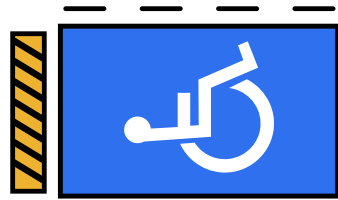
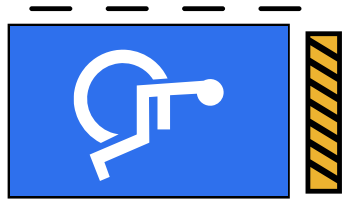


**OOPSIE DAISY!**

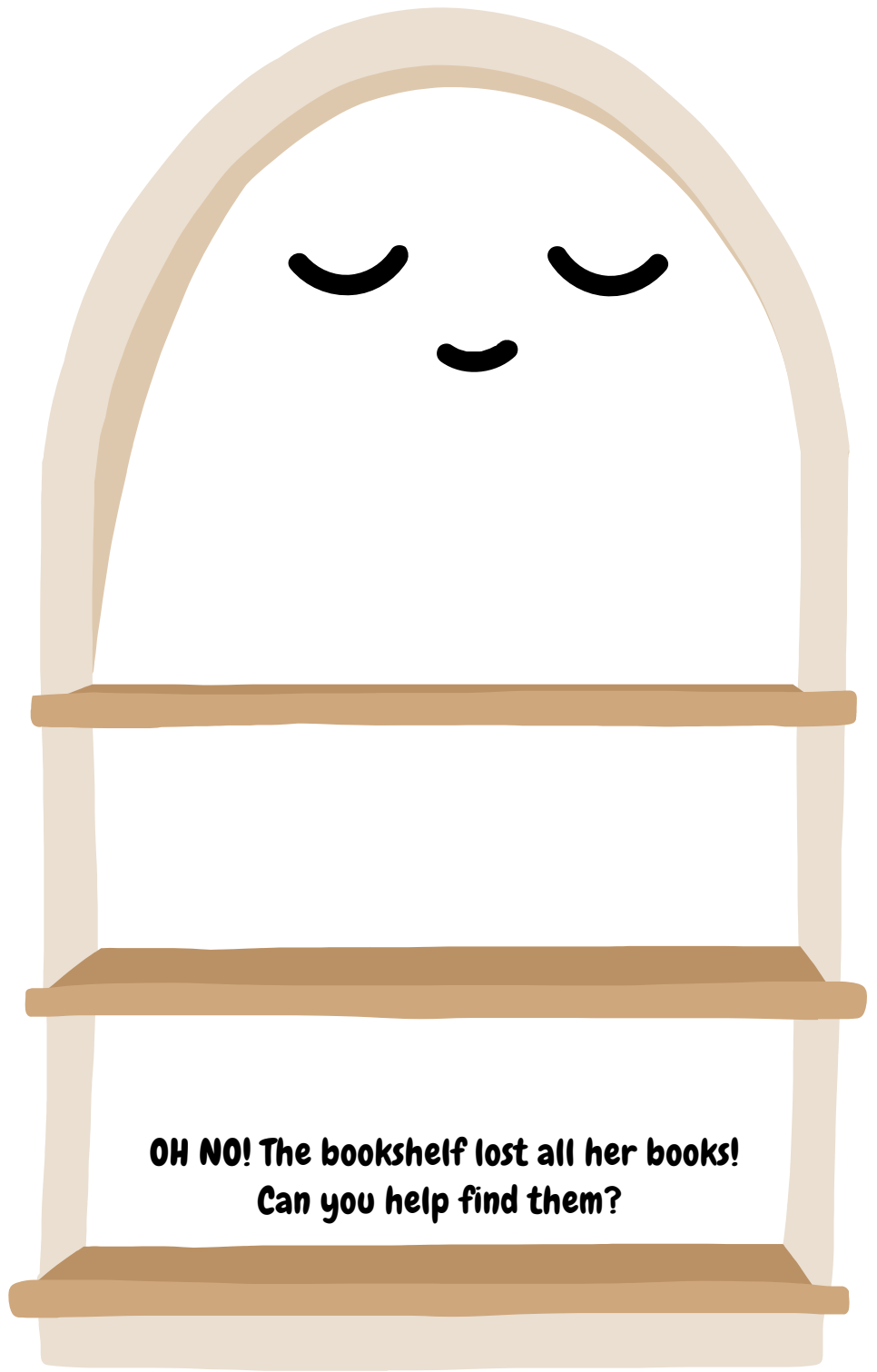
**Someone left the gate open at the Zoo! All the animals ran away. Can you help the Zoo Keeper find all the animals?**



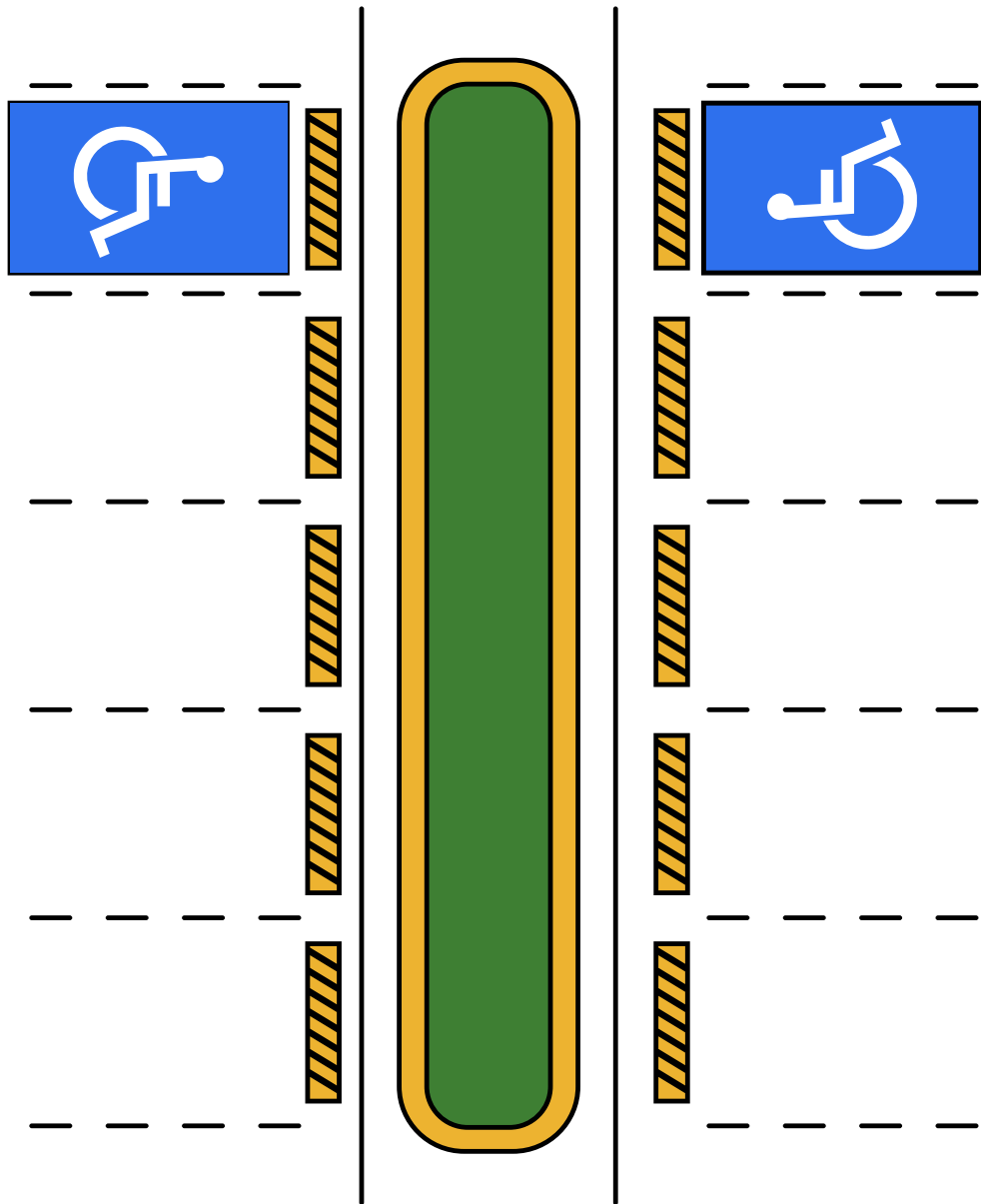
**OH NO! The bookshelf lost all her books!  
Can you help find them?**



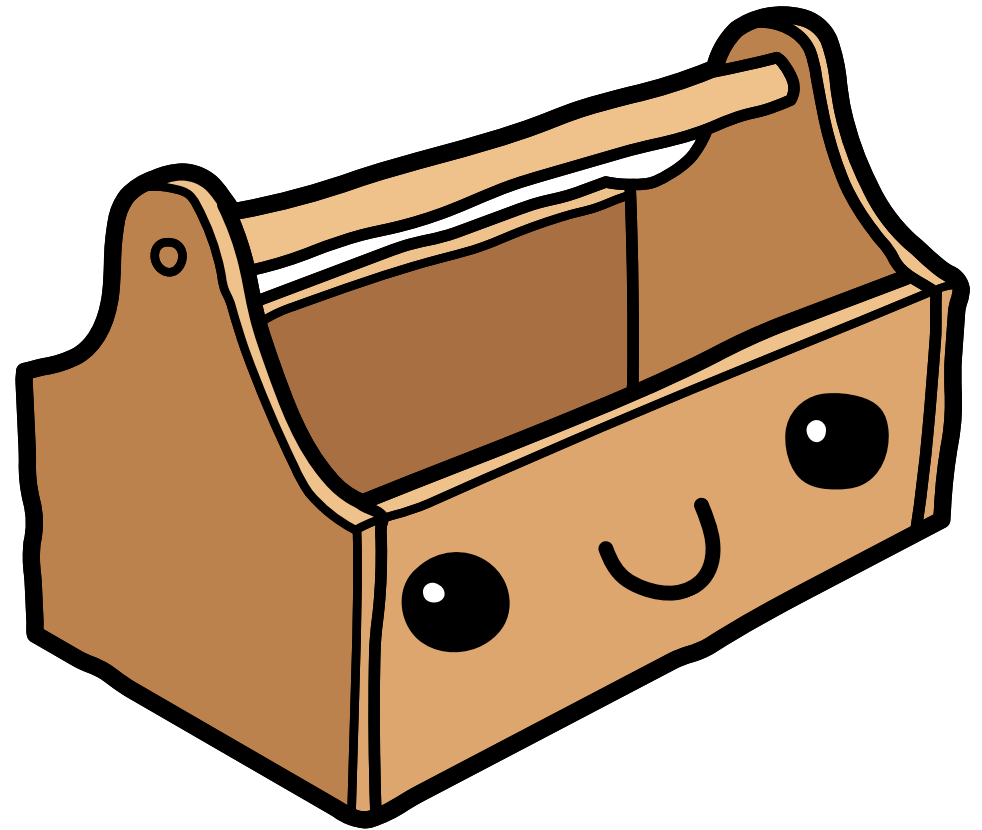
**TRAFFIC JAM! Can you help put the cars back in the parking lot?**



**OH NO! The bookshelf lost all her books!  
Can you help find them?**



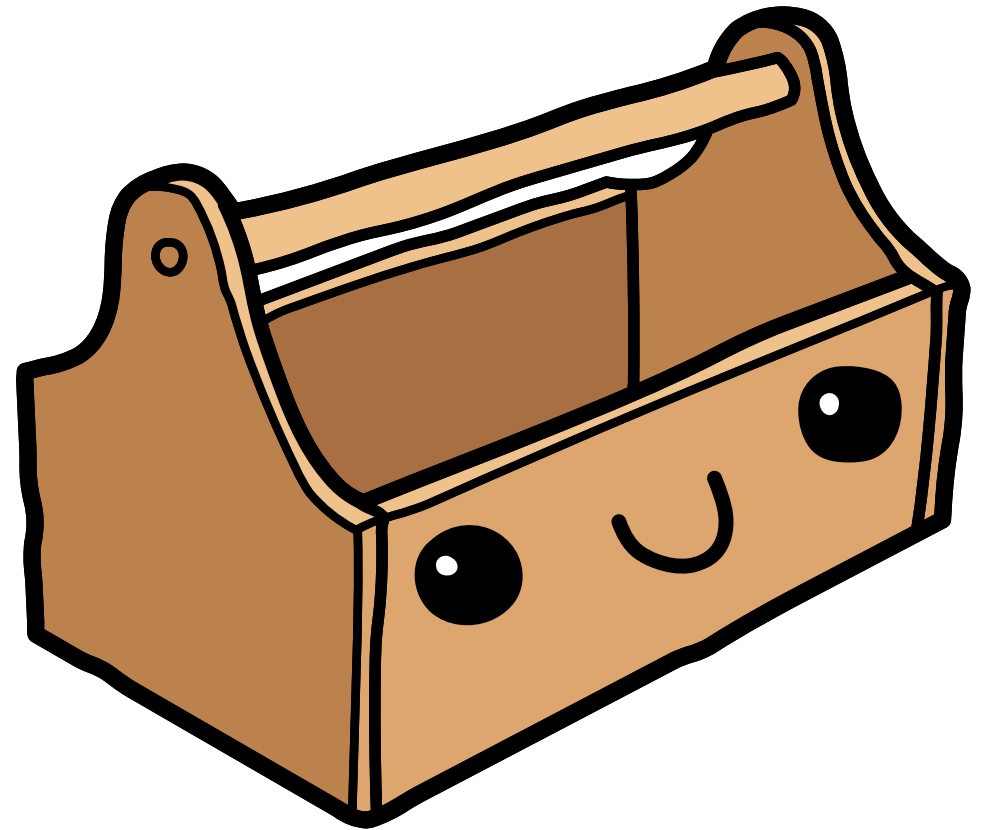
**TRAFFIC JAM! Can you help put the cars back in the parking lot?**



**Can you help me find my friends?**



**Help decorate me for the holidays!**



**Can you help me find my friends?**

